

April 2014

Founded in 1934

President's Message April 2014

Canadians love to talk about the weather. Some people say that we are obsessed with it. But this winter was extreme – the cold temperatures and snow came early and continued interminably. There are reports of ice thickness in The River of three feet. The opening of the seaway was delayed due to heavy ice conditions. However, the most serious weather event was the ice storm in January. Although not as severe as the ice storm of 1998, there is serious damage to the electrical power distribution system.

I have been in touch with Hydro One and have been told that the islands in the Gananoque area have suffered severe damage. Many distribution lines are down and in some cases poles will have to be replaced. I have been assured that additional crews and contractors will be deployed as soon as ice conditions will permit. The estimate for completion of work is two weeks following its commencement.

I would like to welcome a dozen new members from the Royal Canadian Yacht Club Cruising Squadron. Joan Brennan, a long time member of T.I.A. and a member of R.C.Y.C., asked me if we would make a presentation at a winter meeting of the squadron. Doug McLellan and I made a presentation in January and we are pleased to welcome some enthusiastic new members to the association.

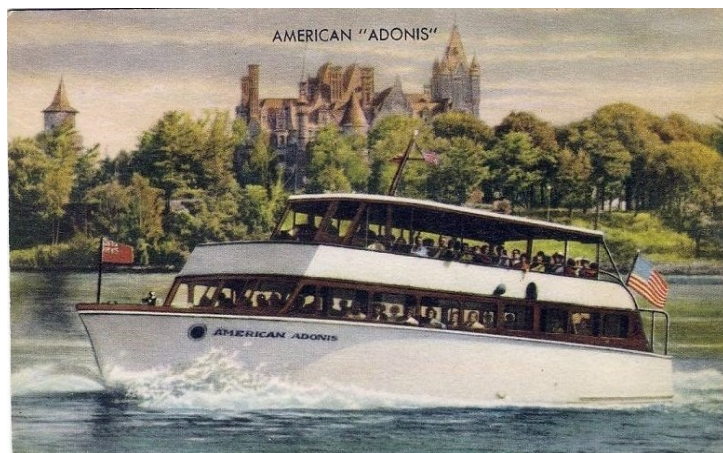
We held a Board meeting in Gananoque in January, and I can report that the financial situation is much improved.

This is primarily due to the success of our various fundraising programs and donations.

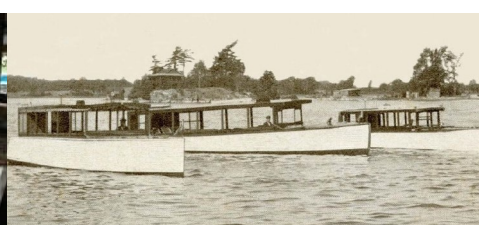
We have redone our T.I.A. brochure and special thanks go to George Kittredge who facilitated the printing and drove to our January meeting from Rochester to deliver the brochures. We intend to circulate the brochures widely to assist in our campaign for new members.

Our Annual General Meeting and Breakfast will take place on Saturday, July 19th, 2014, at the Thousand Islands Playhouse. Please come to enjoy good food, old friends and support the Thousand Islands Association.

Ormond Murphy



How many of these old tour boats do you recognize? It's harder to name them, and the boat lines that operated each and their routes amongst the Islands.



The long, cold winter should be positive for the Great Lakes water levels.

Water levels in some lakes could rise by 70 cm., more than 2 feet by spring, according to the International Joint Commission. That probably refers to the Western lakes where the levels have been well below average for years.





This bay is now filled with boats! Where is it?

In the center of the picture is the old Blinkbonnie boathouse, now the home of the Gananoque Boatline and to it's right in the picture is the old pump house. The bay is now the Gananoque Municipal Marina!



A brand new Breakwater will be in Gan shortly to greet you when you enter the harbour. **Keyhoe Marine** has been working all winter replacing the Customs dock at the south side and a new breakwater is almost ready to be towed to Gan inside Joel Stone Park. Above are the docks, below is a section of the new breakwater. Shhh.. A secret spy photo of the underwater wave breaker!



Own Your Own Shoal

★ A TIA Fundraising Program gives you bragging ★
★ rights to your "Own Shoal" For a modest, fully tax ★
★ deductible, \$500, TIA will designate the "ROCK" ★
★ marker that you indicate as your own personal ★
★ shoal for a period of 5 years you can tell your ★
★ friends, "I Own My Own Shoal" ★

★ See our web site 100islandsassociation.net for ★
★ all the benefits. ★

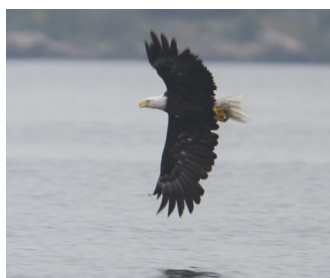
24 Official TIA Shoal Owners to Date:

★ There are still tons of "ROCKS" without owners! ★

(★) ☆☆☆☆☆☆☆☆☆☆☆☆☆☆☆☆☆☆☆☆☆



Barbara Butts, Smoke Island (Hickey Island) and past TIA President being entertained by Edith Amsterdam shortly after Edith's 89th birthday at her resort, Curry Mansion in Key West. Edith also owns Casa Blanca on Cherry Island, Alexandria Bay, New York.



Membership Fees

- Single Membership: \$50.00 (Includes one Breakfast)
- Couple Membership: \$75.00 (Includes two Breakfasts)
- Family Membership: \$100.00 (Includes Breakfasts for 2 adults and 2 children under 18)
- Business Membership: \$100.00 (Includes two Breakfasts)

Memberships run for a calendar year. Reminders are sent in the April Newsletter with your Boat Decal. If you haven't done so already, please send your membership fees or pay on-line with PayPal to avoid being dropped from the mailing list. We need your continued support to maintain and improve our programs.

NEW INFORMATION PLEASE READ

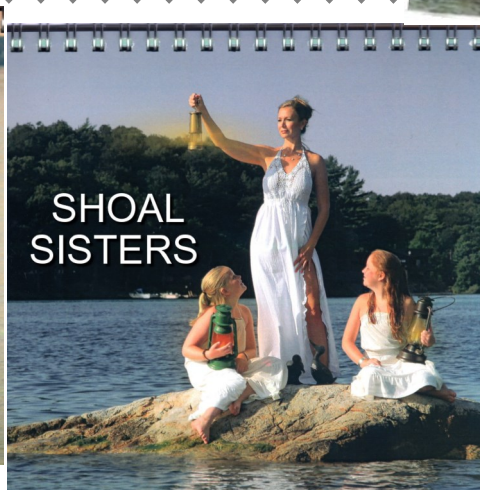
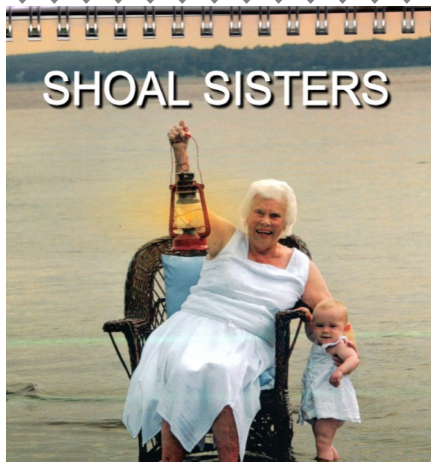
Any new member (to include singles, family, and businesses) who joins TIA any time after June 30th (Including at the AGM of any given year and regardless of the method of payment, can do so at half of the prevailing membership fee.

New Members most welcome.

Canadian Address	U.S. Address
P.O. Box 274,	P.O. Box 718
Gananoque, Ontario	Wellesley Island,
K7G 2T8	NY, 13640

TIA Executive

Ormond Murphy - President
 Graham Armstrong - V.P./ Secretary-Treasurer
 Allison Burchell-Robinson— Membership
 Bryan Jones - AGM Coordinator
 George Kittredge - Membership
 Pete Medcalf - Photographer
 David Orr - Shoal Markers/Newsletter
 Raymond Pfeiffer - Membership
 Paul Regan Jr. - Heritage Foundation
 Thornley Stoker- Web site
 John Taylor - Environment, Membership
 Ken White - Shoal Markers
 Bruce Wilson - Parkway Clean-Up
 Emeritus: William Hale
 E-Mail: info@1000islandsassociation.net
 Web: www.1000islandsassociation.net



Price Reduction !! \$20.00 for 21 months. The Spring and Summer of 2013 saw 22 **Shoal Sisters** grab their lamps and "hit" the shoals with their photographers. From 11 months to 94 years of age, from Brockville to Wolfe Island, Alexandria Bay to Grindstone. It's all been about raising awareness for the White Shoal markers we all rely on and raising funds for their maintenance. Now ... the calendar, good for 2 years, from 2014 through 2015, The River community will thank you! Visit www.lovetheiriver.com to order now. Also available at a few choice locations in the area, see our website for locations. Any remaining at the AGM.

How warm was it last summer? See above and read their awesome stories in the **Shoal Sisters Calendar** while they last!

How cold was it last winter? Look at the ice on the lighthouse below in Lake Michigan after a storm in January.

